

REGIONAL INTERNATIONAL ARBITRATION CONFERENCE

DAWN OF INTERNATIONAL ARBITRATION IN THE SOUTH PACIFIC

12 & 13 February 2018

Westin Denarau Island, Nadi, Fiji

TRADE & INVESTMENT FACILITATION BY ARBITRATION AND THE RULE OF LAW

Prof Michael Ewing-Chow
WTO Chair, NUS

12 February 2018

This is not an ADB material. The views expressed in this document are the views of the author/s and/or their organizations and do not necessarily reflect the views or policies of the Asian Development Bank, or its Board of Governors, or the governments they represent. ADB does not guarantee the accuracy and/or completeness of the material's contents, and accepts no responsibility for any direct or indirect consequence of their use or reliance, whether wholly or partially. Please feel free to contact the authors directly should you have queries.

Keynote Address
by Gary Born

Government, Private Sector,
Lawyers and Judges

Disputes in the
South Pacific

Bula Vinaka

Mock
Arbitration

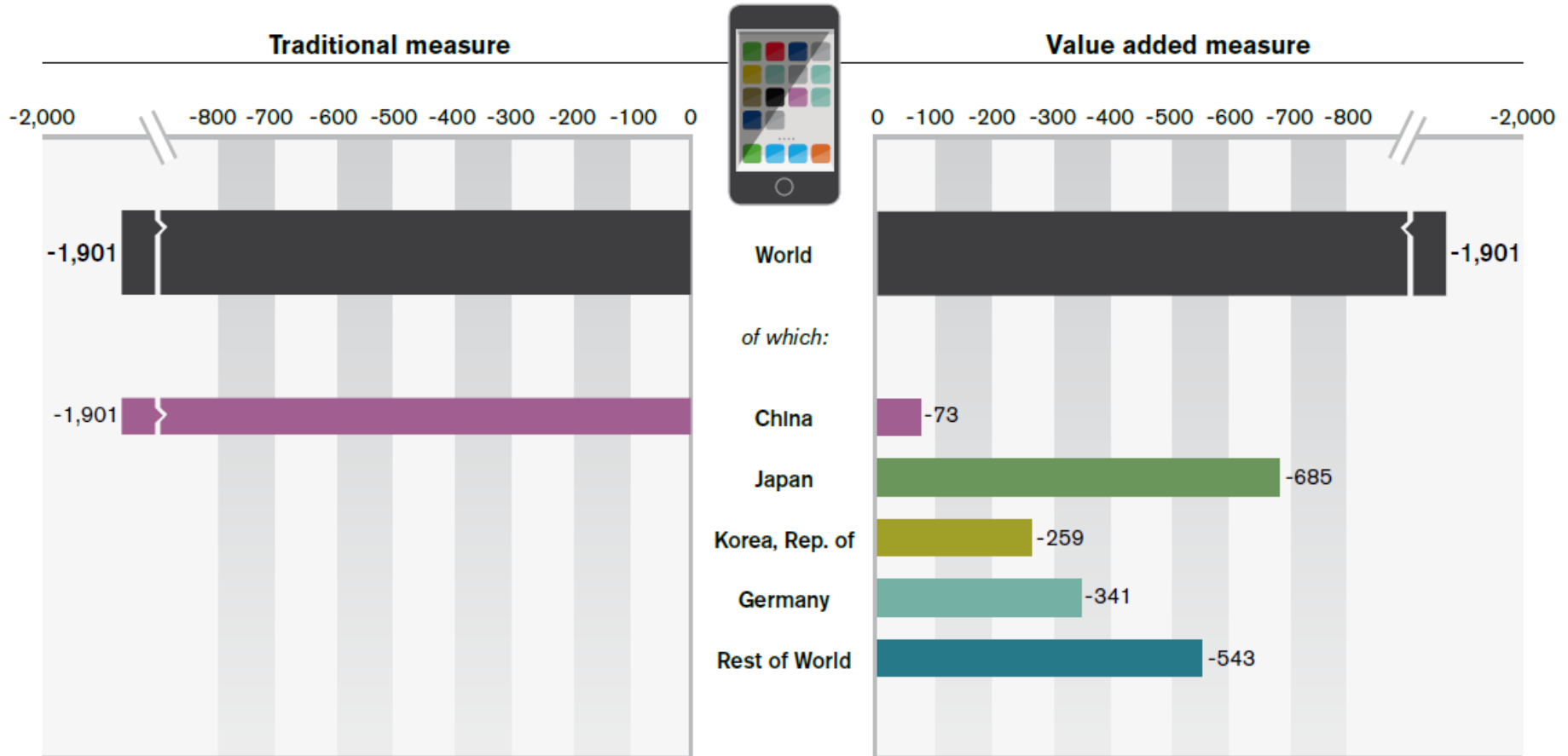
Promotion of FDI
through International
Arbitration Reform

New York Convention
and the South Pacific



United Nations
UNCITRAL

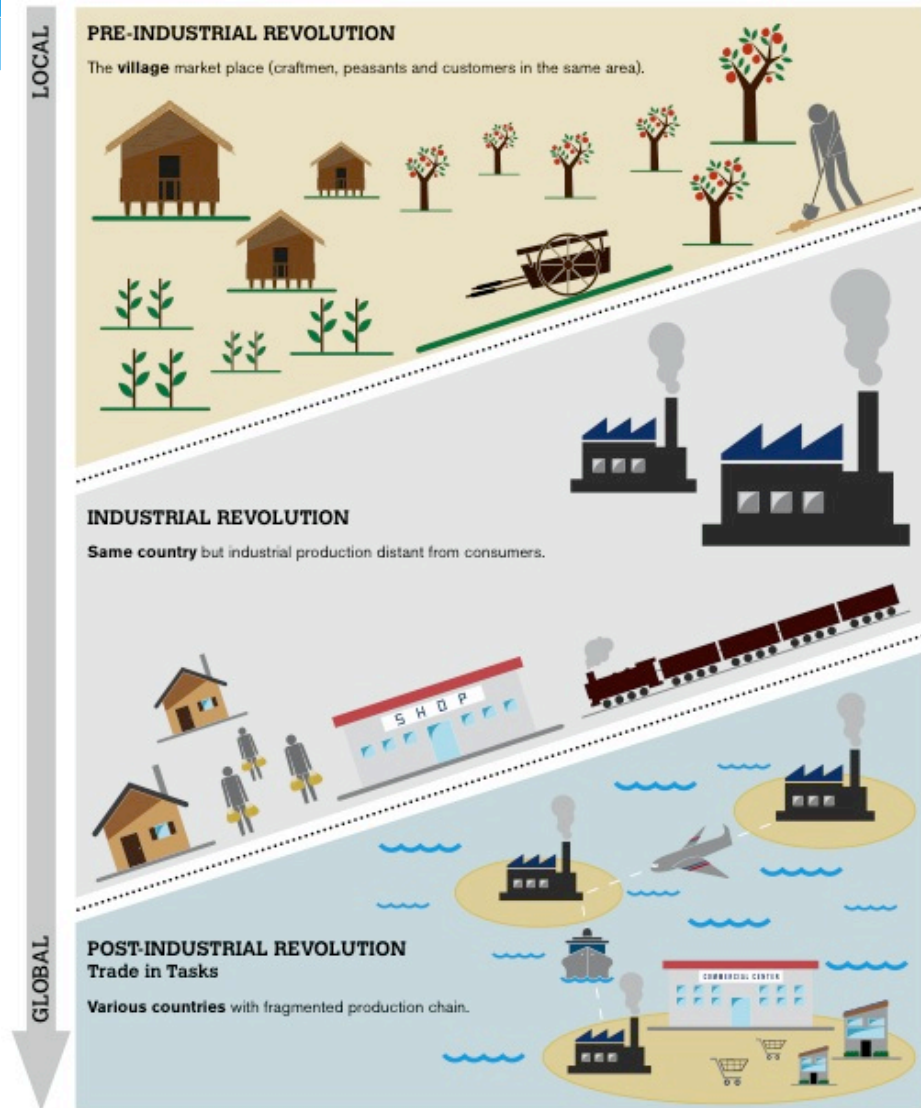
Made in the World



Source: Meng and Miroudot, based on Xing and Detert (2010)

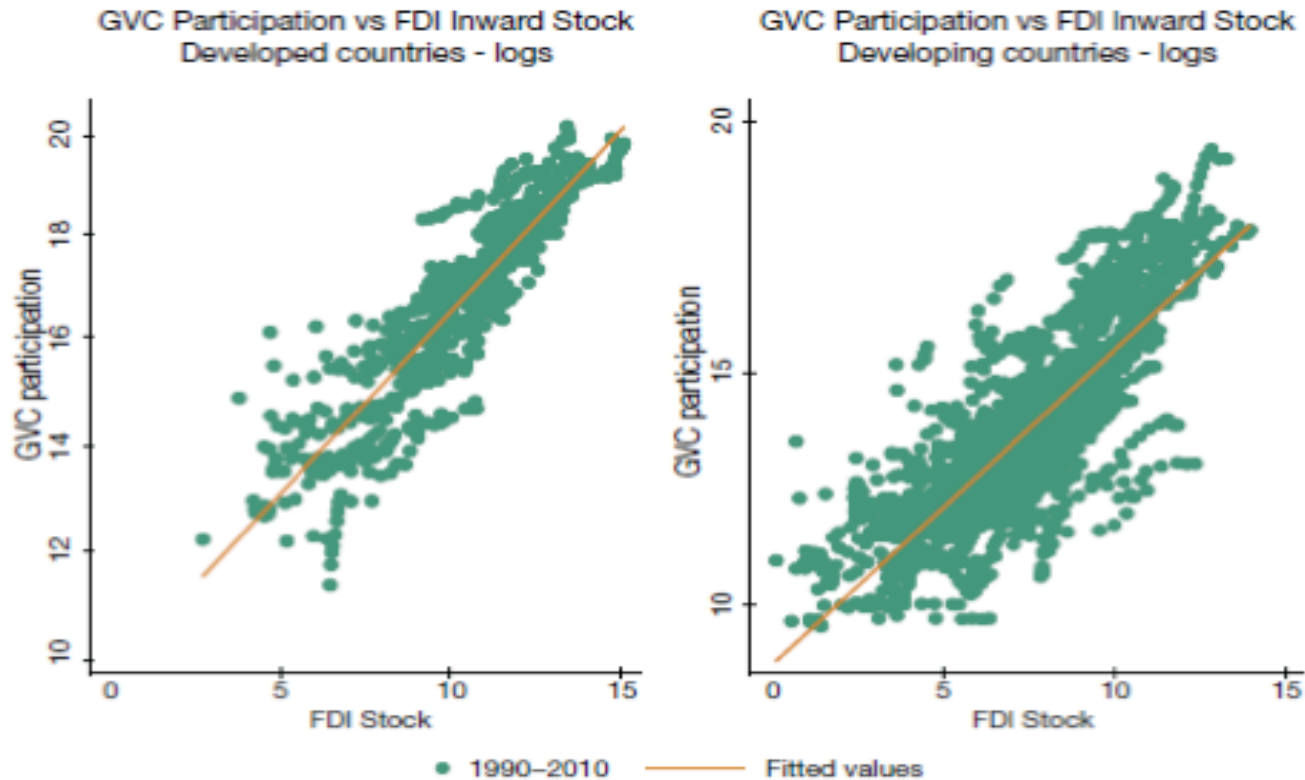
From Single Producer to Global Value Chains (GVC)

- Globalization, Technology and MNC Production Networks and Just In Time (JIT) manufacturing have changed trade patterns.
- Behind the border measures are more important to trade flows for both **goods and services**.
- The **Rule of Law** adds to the attractiveness of individual states and even of regions for this GVC growth.



Source: WTO Secretariat.

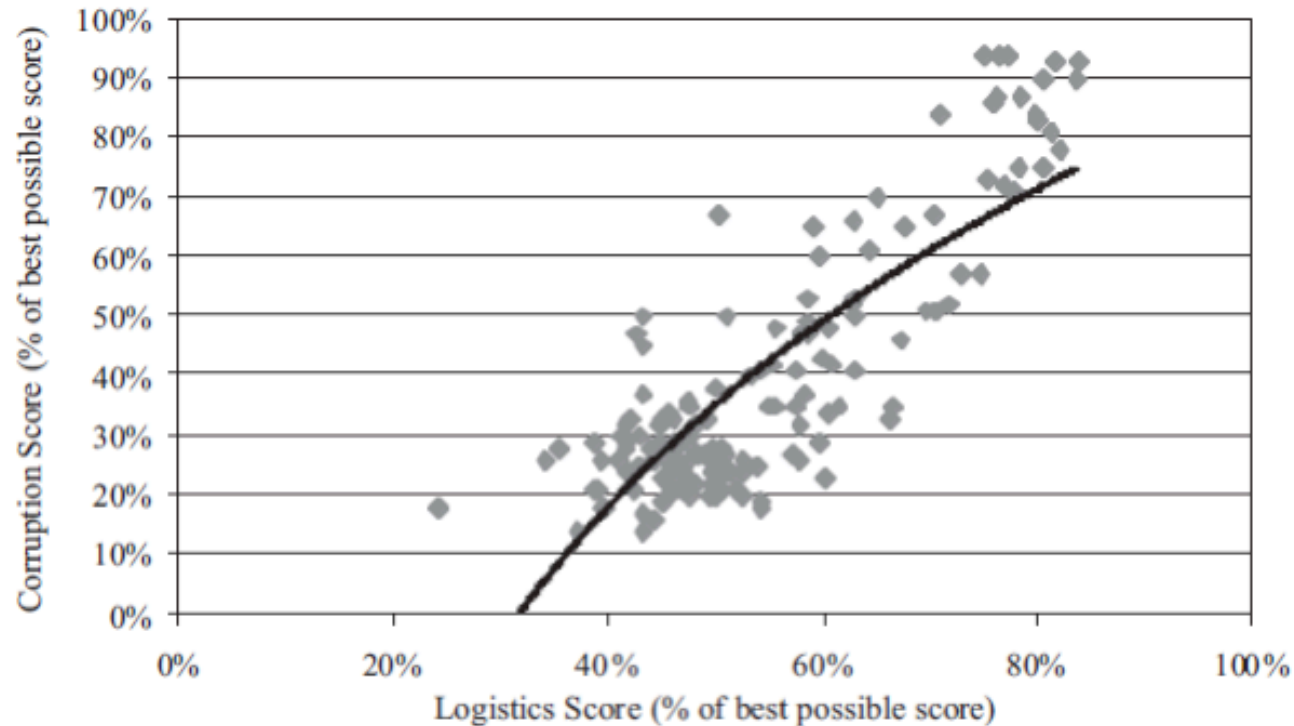
FDI and GVC Participation



Source: UNCTAD-Eora GVC Database, UNCTAD FDI Database, UNCTAD analysis.

Note: Data for 187 countries over 20 years. The regression of the annual GVC participation growth on the annual FDI inward (stock) growth yields a positive and significant correlation (at the 5 per cent level) both for developed and developing countries ($R^2 = 0.77$ and 0.44 , respectively). The correlation remains significant considering the two time periods 1990 - 2000 and 2001 - 2010 separately. Regressions use lagged (one year) inward FDI (stock) growth rates and include year fixed effects to account for unobserved heterogeneity.

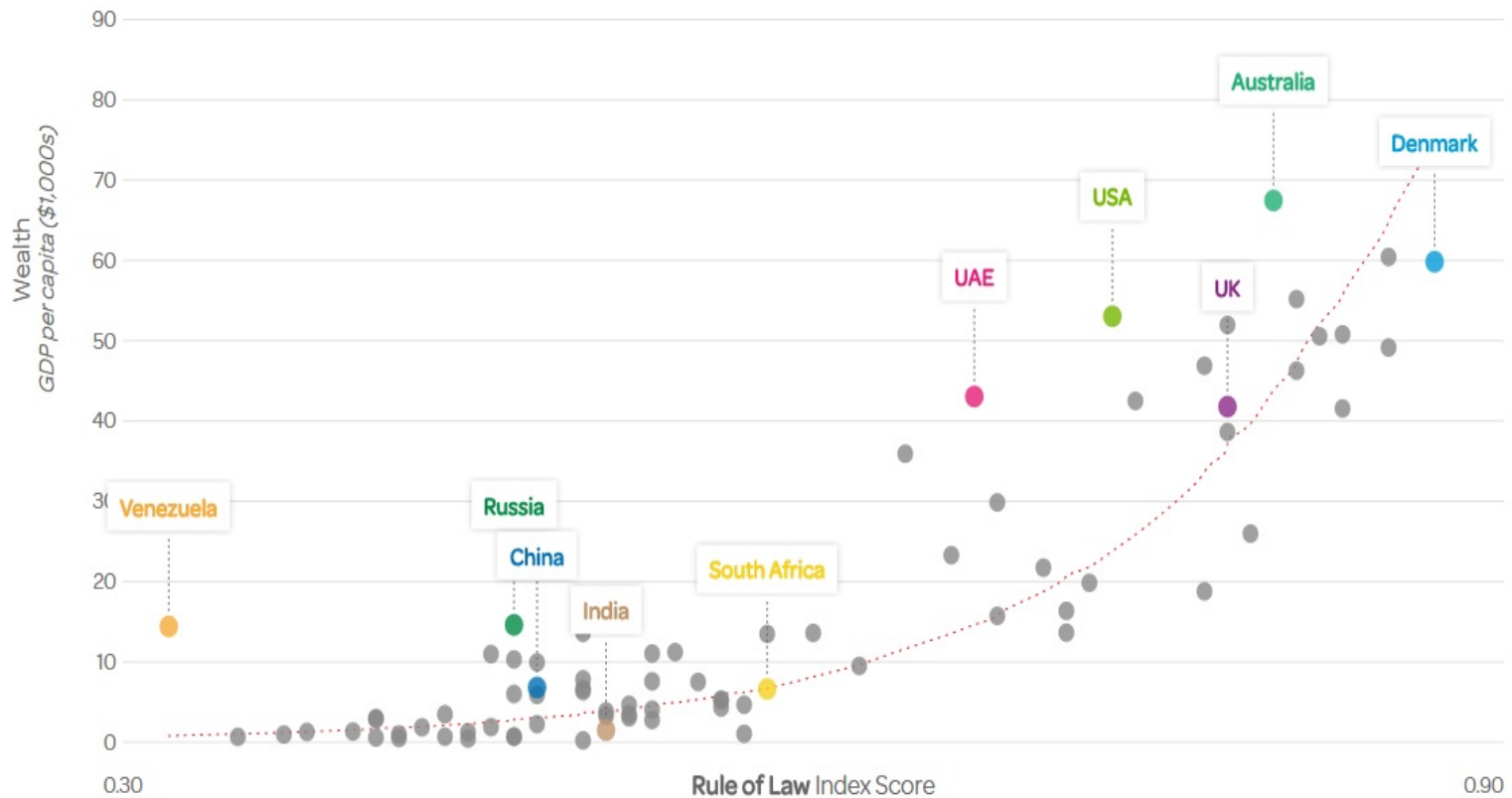
Relationship between Logistic Performance and Corruption



Source: World Bank and Turku School of Economics (Finland), Logistics Performance Index, <http://info.worldbank.org/etools/tradesurvey/modelb.asp>, and Transparency International, Corruption Perceptions Index, <http://www.transparency.org/>.

Note: Each point is a country's set of scores for both indices.

GDP and WJP RoL Index: Correlation but Causation(?)



Source: Lexis Nexis RoL Impact Tracker 2017

Integration through the Rule of Law: Elements of Legalization

Goldstein, Kahler, Keohane, and Slaughter:

- 1. Obligation** refers to international actors being legally bound by legal rules and procedures, whether international or domestic.
- 2. Precision** means that these rules and procedures define rights and obligations in unambiguous ways.
- 3. Delegation** relates to the grant of authority to third parties, such as courts, arbitrators, and administrative bodies, to interpret and apply rules during dispute settlement.

Arbitration and the Rule of Law

International Arbitration provides MNCs with greater confidence that:

1. Disputes can be efficiently settled;
2. That awards can be enforced across many jurisdictions; and
3. That bargains and agreements can be made to stick.

For Host States, International Arbitration acts as a support for existing judicial systems:

1. Sharing workload and expertise; and
2. Reducing upfront resource commitment.